

The challenge

To improve the health and wellbeing of an ageing population.

The solution

PROactive care. Putting the person at the centre of care provided.

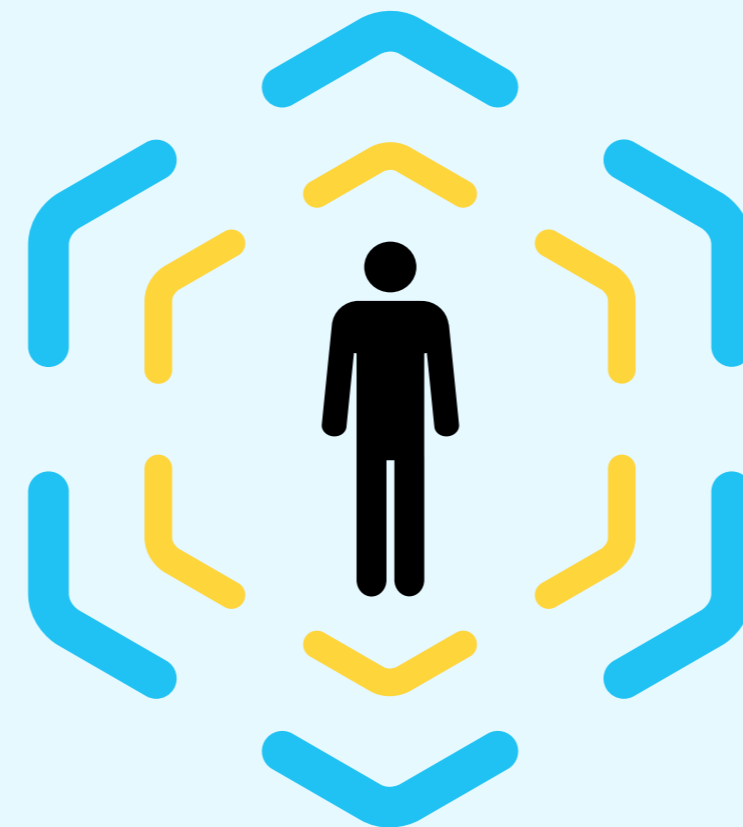
Patent centred

Improve the quality of care received by the patient and promote independence



Targeted

Shift from REactive care



By 2026

58,000
more people over
the age of 65



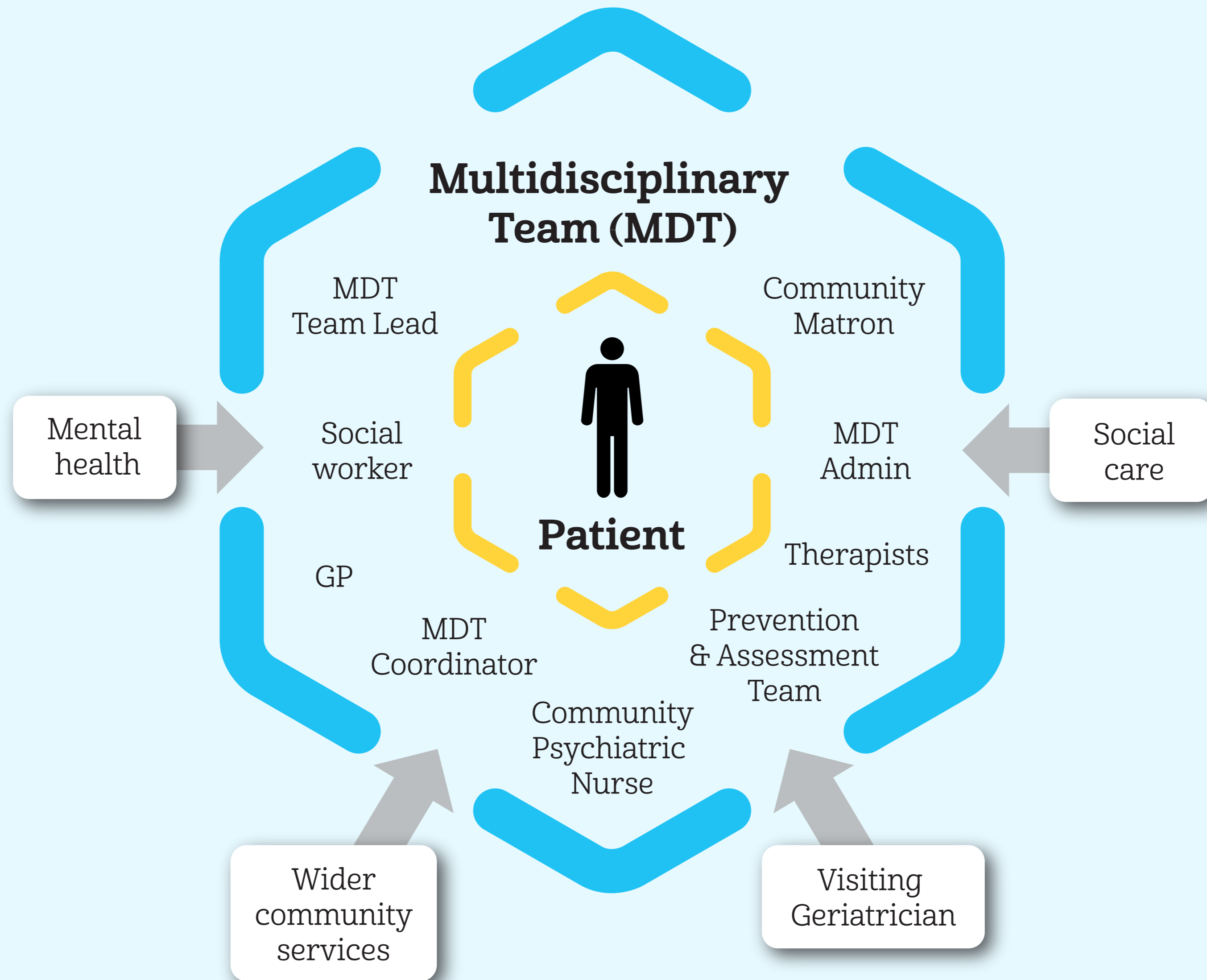
16,000
more people
over the age of **85**

Many people have more
than one long-term condition

Care goals

- 1 Personalised care
- 2 No decision about the patient without the patient
- 3 Shift care to preventative care from reactive care
- 4 Integrate health and social care
- 5 Promote independence
- 6 Care locally and in community settings

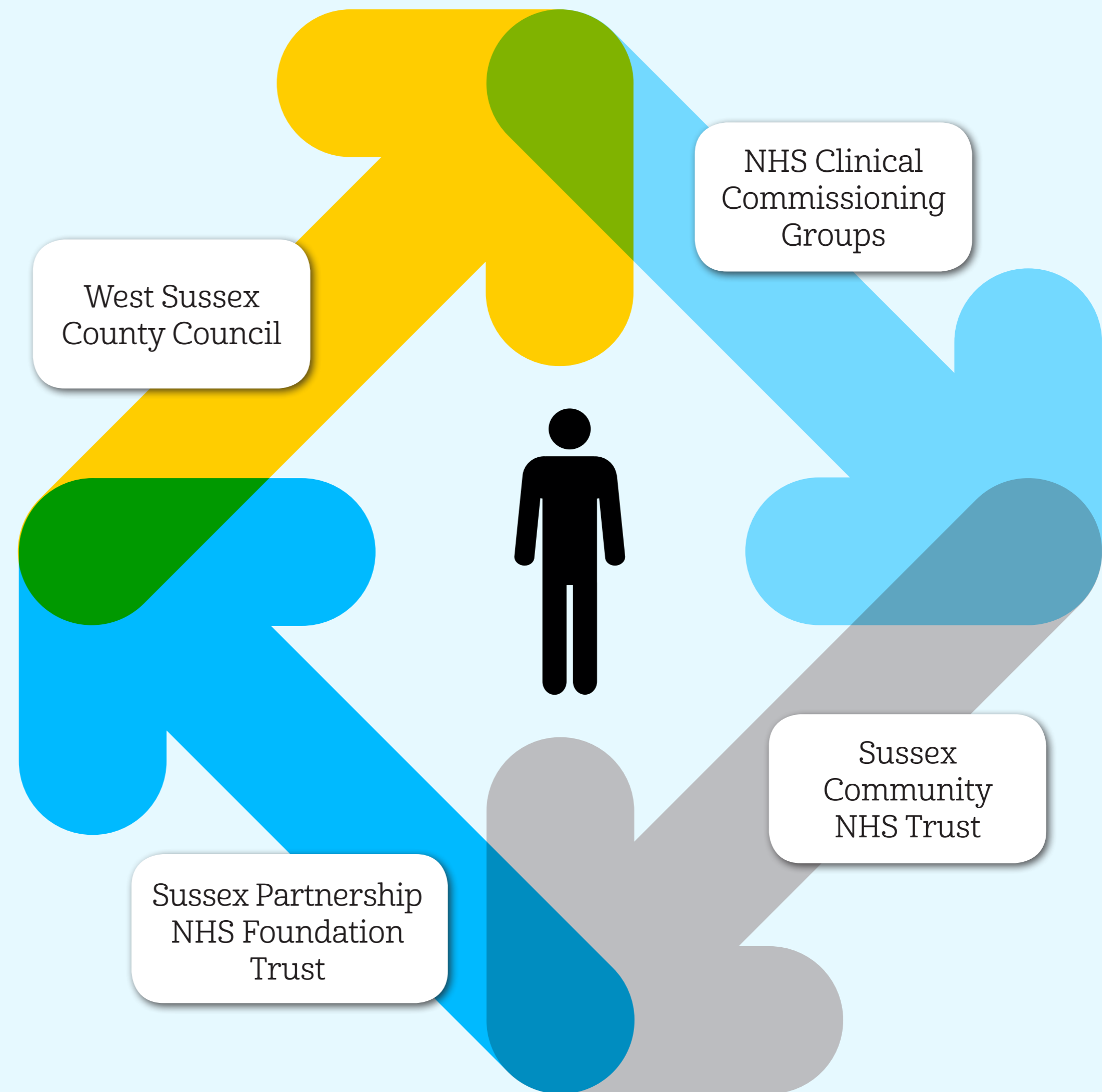
Model of care





PROactive care

Integration of health
and social care



What does it mean?

Single access point Partnership working

Outcome focused Early identification of needs

Collaborative working

Assistive technologies

Physical health
Preventative

Integrated care

Prioritise

Person centred

Empowered Patient

Mental health

Independent living

Dedicated team Contingency plan

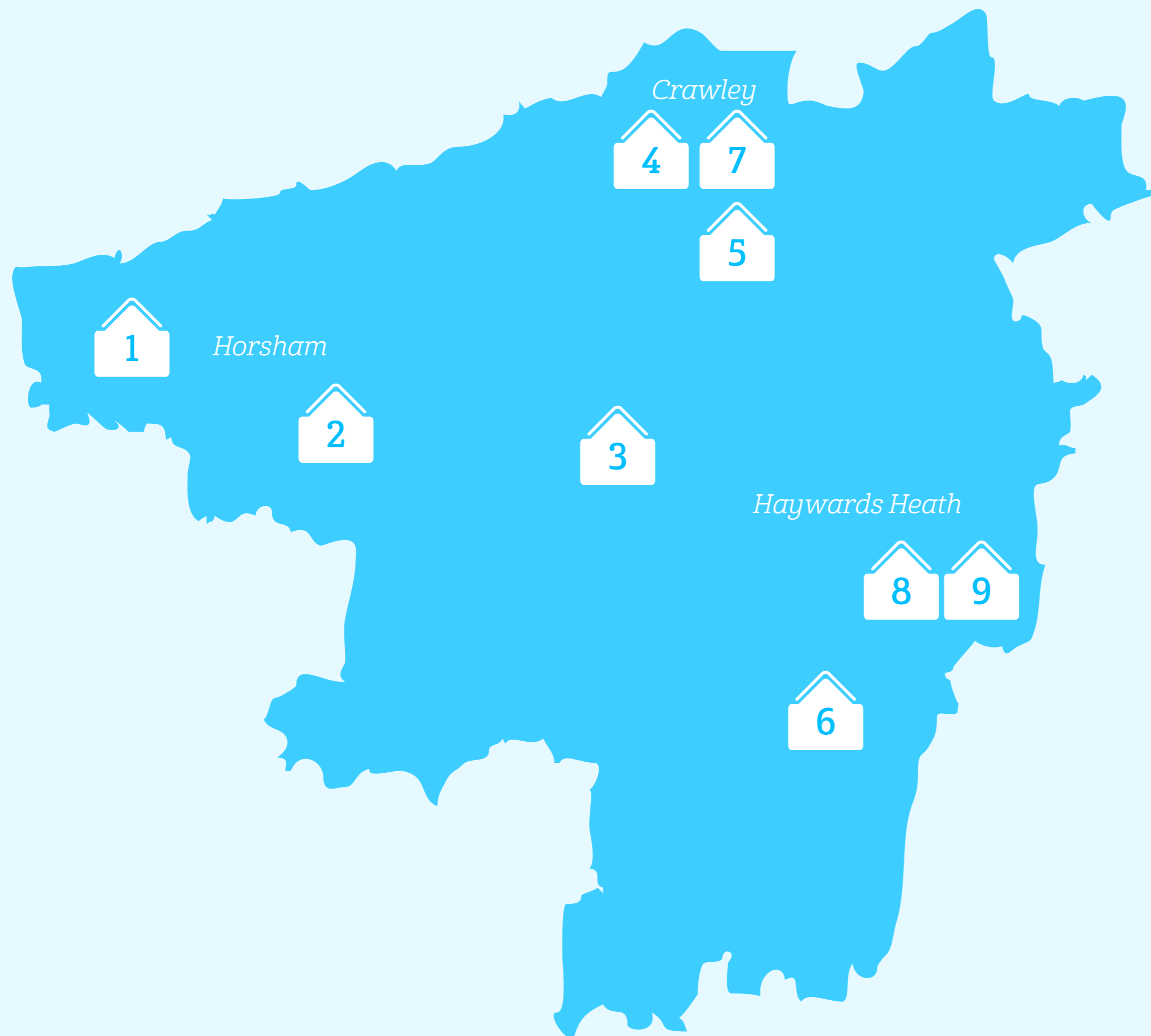
Seamless care

Health and social care

Positive experience

Voluntary sector support

MDT locations



- 1 Horsham MDT Team 1**
Venue: Horsham Hospital
 - Courtyard Surgery
 - Riverside Surgery
 - Park Surgery
- 2 Horsham MDT Team 2**
Venue: Horsham Hospital
 - Holbrook Surgery
 - Rudgwick Medical Centre
 - Orchard Surgery
 - The Village (Southwater)
- 3 Crawley MDT Team 1**
Venue: Leacroft Medical Practice
 - Ifield Medical Practice
 - Langley Corner Surgery
 - Gossops Green Surgery
- 4 Crawley MDT Team 2**
Venue: Southgate Medical Group
 - Woodlands Clerklands
 - Coachmans Medical Practice
 - Bewbush Medical Centre
 - Crawley Health Centre
- 5 Crawley MDT Team 3**
Venue: Crawley Down Health Centre
 - Pound Hill Surgery
 - The Glade
 - Bridge Medical Centre
 - Saxonbrook Medical Group
- 6 Mid Sussex MDT Team 1**
Venue: Sidney West
 - Mid Sussex Health Centre
 - Park View Health
 - Meadows
 - Silverdale
 - The Brow Medical Centre
- 7 Mid Sussex MDT Team 2**
Venue: Crawley Down Health Centre
 - Moatfield Surgery
 - Judges Close
 - Ship Street Surgery
- 8 Mid Sussex MDT Team 3**
Venue: Haywards Heath Health Centre
 - Ouse Valley Practice
 - Cuckfield Practice
 - Cowfold Surgery
 - Dolphins Practice
- 9 Mid Sussex MDT Team 4**
Venue: Haywards Heath Health Centre
 - Newtons Health Centre
 - Lindfield Medical Centre
 - Northlands Wood Practice