



care
WITHOUT
CARBON



Sussex Community
NHS Foundation Trust

Green Plan 2021 - Executive Summary

Our environment | Our health | Our commitment



Introduction and context

Climate change is a health emergency and a health opportunity. This Green Plan sets out how we will continue to meet our Trust vision to provide excellent care at the heart of the community, in the context of climate change. In tandem to our Trust vision we have developed our Care Without Carbon vision: together we lead the way in Net Zero Carbon healthcare; protecting the environment on which our health depends.

As a leader in the sustainable health and care sector, we are committed to meeting the ambitious NHSEI Net Zero Carbon targets, and where possible, exceeding them. This means reaching Net Zero for our direct emissions by 2040 and our indirect emissions by 2045 or earlier.

Delivering on this strategy will drastically reduce our environmental impact as a Trust and also deliver real health benefits to our patients and the wider community.

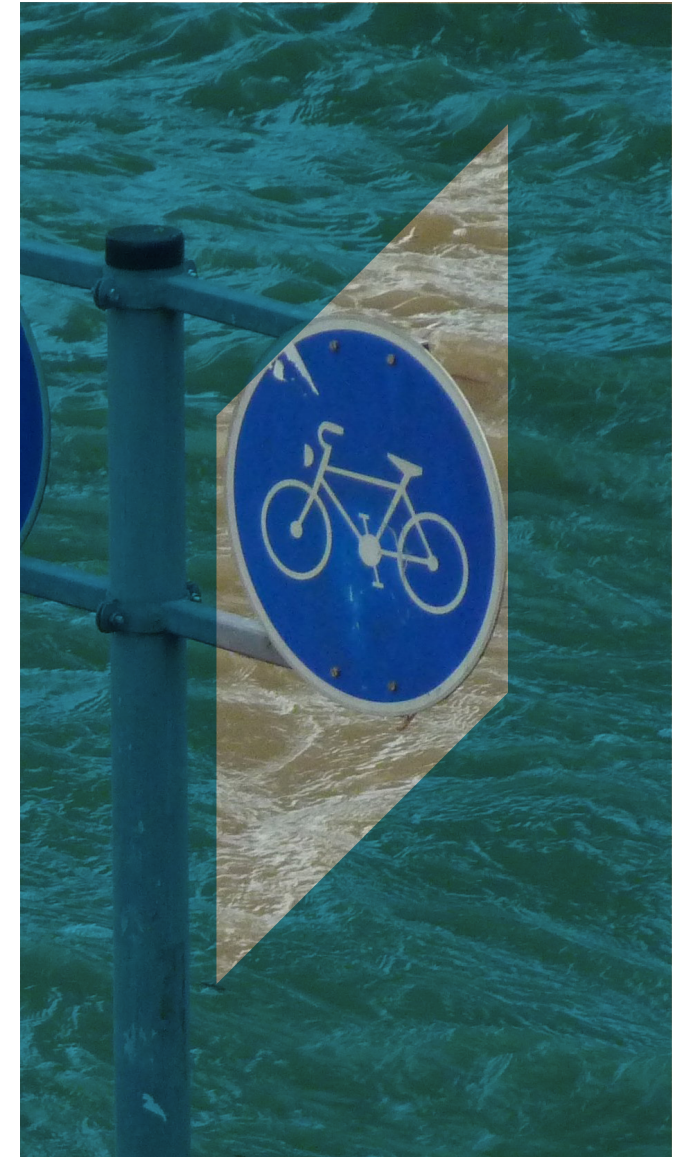
Together we lead the way in Net Zero Carbon healthcare, protecting the environment on which our health depends.

Why aim for Net Zero Carbon healthcare?

Climate change and health are inextricably linked, with vulnerable populations such as our patients being most at risk from the harmful effects of climate change.

Within the public sector, the NHS is the largest emitter of CO₂, making up 4-5% of England's carbon footprint. With 3.5% of vehicles on the road associated with NHS business, plus the huge amount of waste produced, our impact on climate change and the environment is significant. The way we are currently delivering healthcare is in itself contributing to ill health.

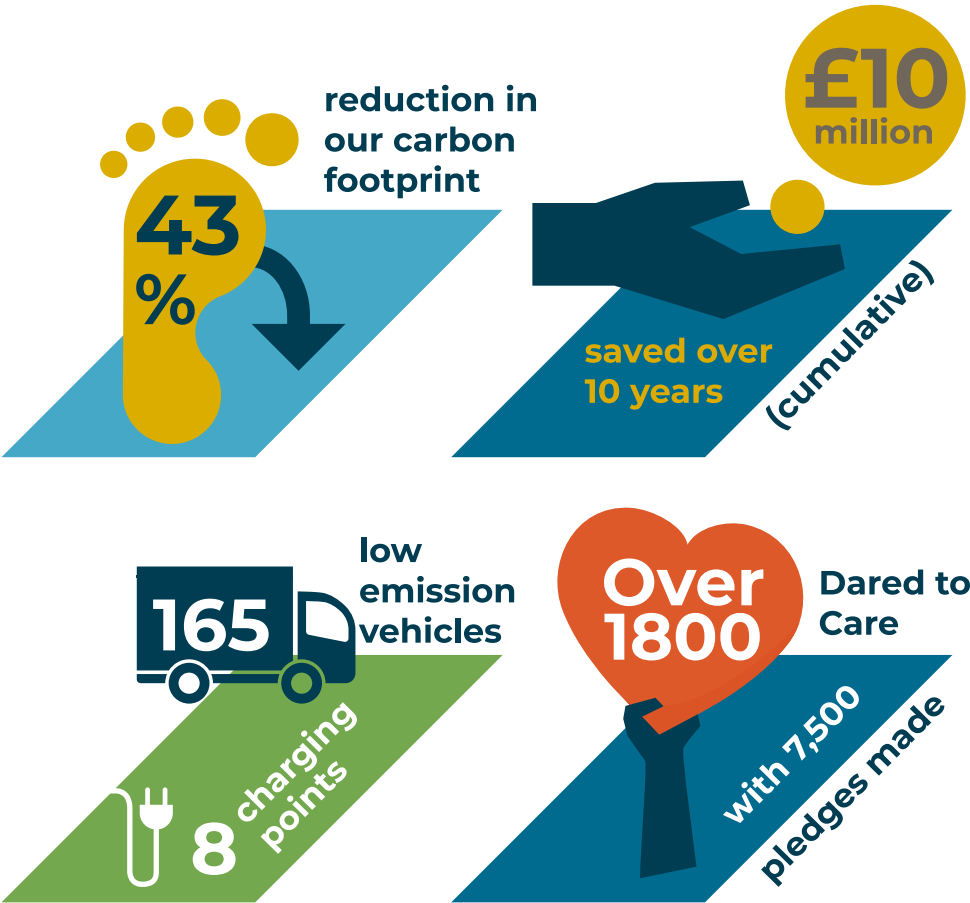
That is why NHS England Improvement has set a target for all NHS trusts to achieve Net Zero Carbon emissions by 2040. Taking action on our changing climate is delivering on our commitment to care for our community.



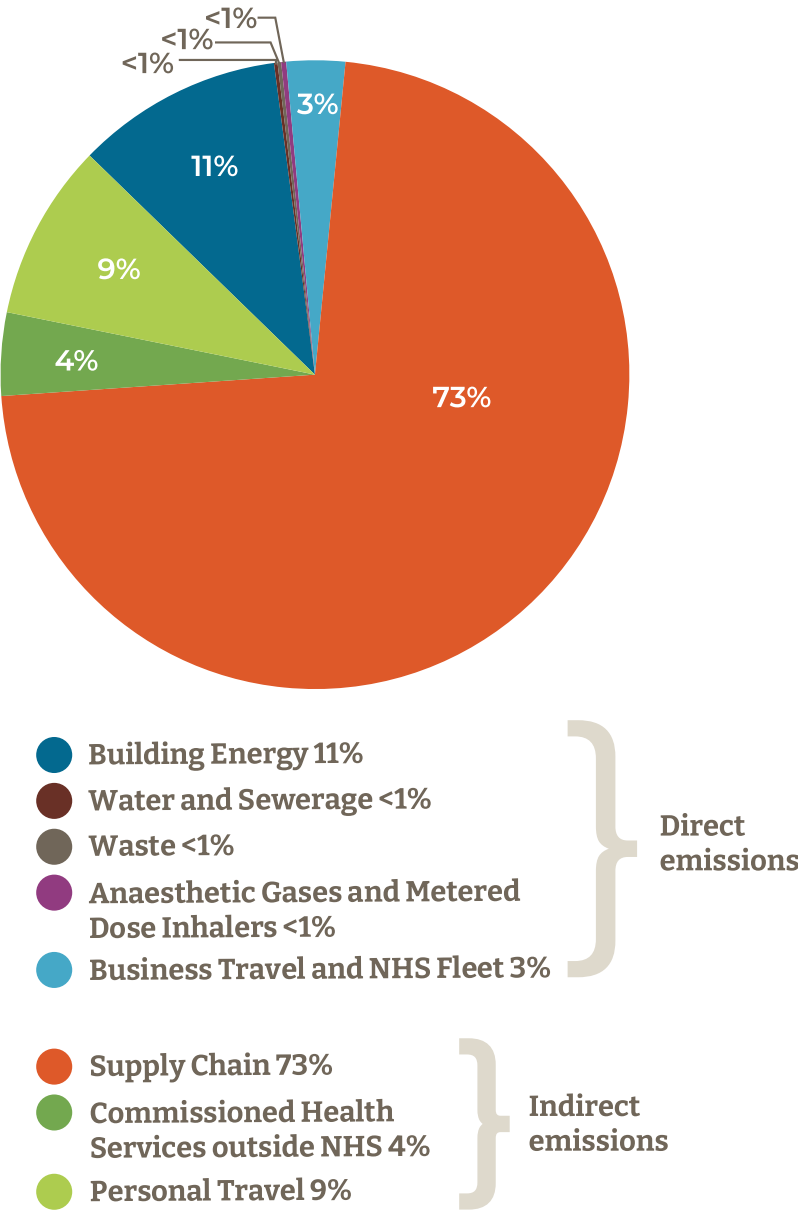
Progress so far

Building on progress to date

This is not new territory for us. Back in 2014 we developed a framework for delivering more sustainable healthcare, Care Without Carbon. Ten years into the sustainability programme at Sussex Community, we've made some significant progress.



Our NHS Carbon Footprint Plus 2020/21



Where to next: tackling the next phase of carbon reduction

The question now is: what next? We're at a moment in time where we are facing some deep challenges. But it's also a time of opportunity; a gathering of momentum towards a more sustainable health and care system.

Our second Care Without Carbon strategy is about building on that momentum, making sustainability part of our everyday thinking and decision making and maximising our impact as far and wide as possible.

With 80% of our carbon footprint determined by clinical decisions, if we are to hit Net Zero Carbon we must change the ways we deliver care. This demands a strategy that focuses on clinical integration more than ever before.

To deliver this, we have developed our Care Without Carbon framework to incorporate our set of Sustainable Healthcare Principles, based on principles originally developed by the Centre for Sustainable Healthcare.

These principles support both the urgently needed reduction in our carbon footprint and the delivery of high quality care for our community, working in two ways:

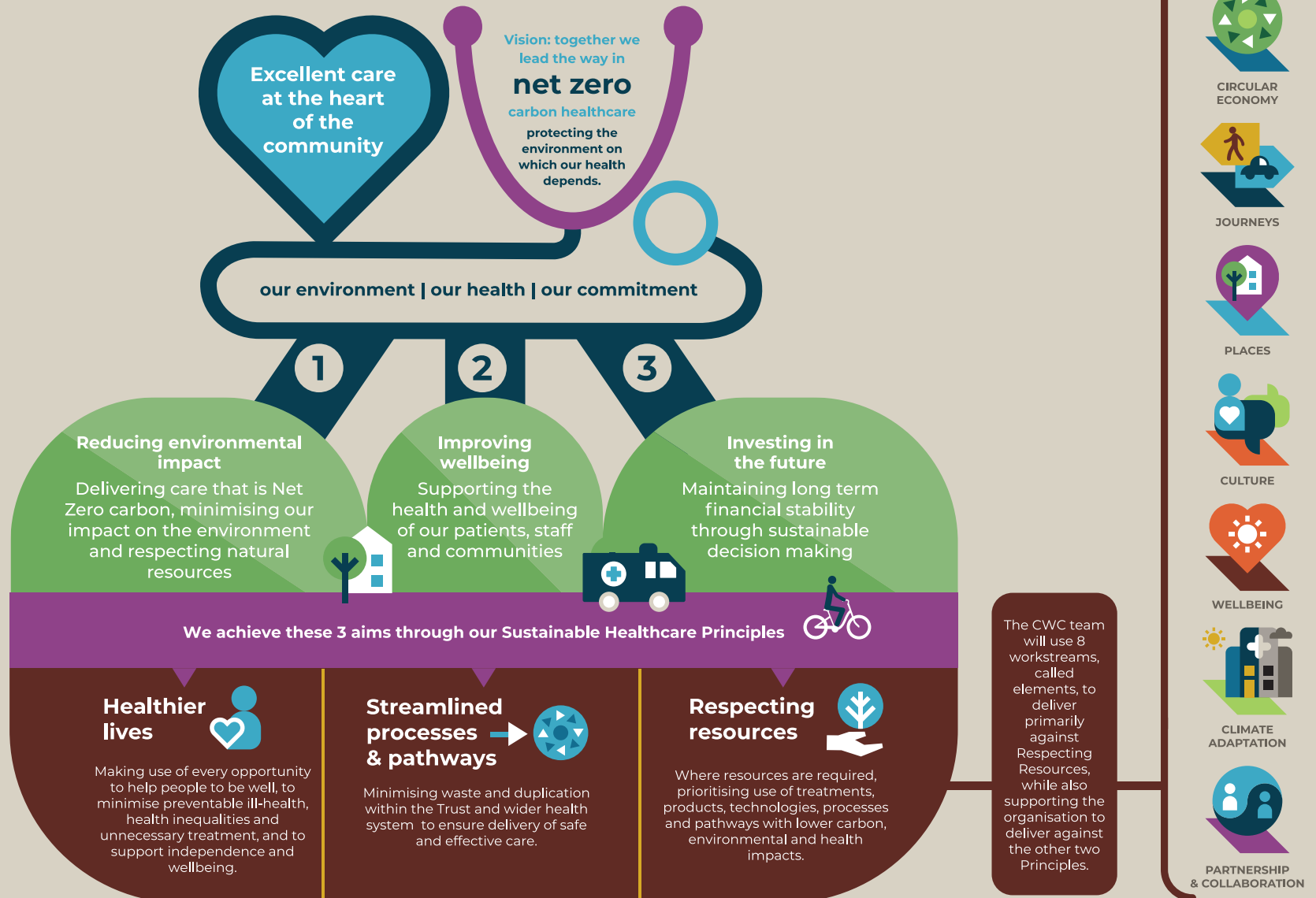
- optimising our level of activity/resource use by helping people to stay well and by making our processes as efficient as possible;
- and reducing the carbon intensity of the care we provide.

In embedding and delivering against these principles we will meet our Net Zero Carbon target.



CWC: our new framework

This framework sets out our strategic approach to sustainable healthcare at Sussex Community.



Achieving Net Zero: a roadmap to a new way of working

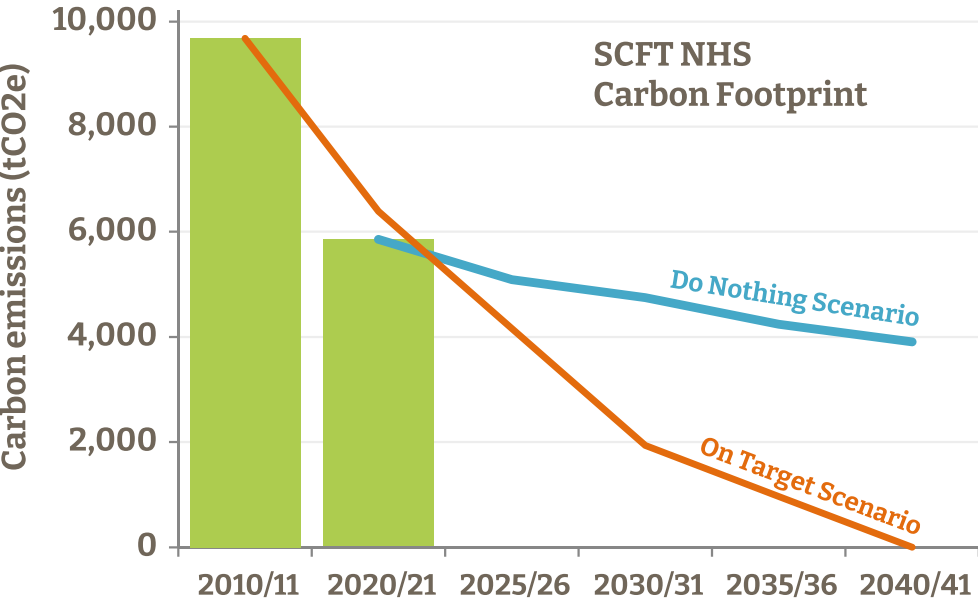
NHS England's Net Zero targets for sustainable healthcare are ambitious:

- **Net Zero by 2040 for direct emissions (NHS Carbon Footprint)**
- **Net Zero by 2045 for indirect emissions (NHS Carbon Footprint Plus)**

We are committed to achieving or exceeding them where possible. Our interim target of 57% reduction in direct emissions by 2025 reflects this.

Our roadmap to Net Zero Carbon

We've set out below our target trajectory to Net Zero for our direct emissions, compared to a Do Nothing scenario. The Do Nothing scenario reflects the emissions as a result of changes externally, with a key factor being the greening of grid electricity, projected to reach Net Zero in the 2030s.



In delivering against our Net Zero target, we'll take the following approach:

1. Minimising resource use: reducing as far as possible the resources required in the first place. From reducing the need for travel by embracing agile working and route planning for community nurses; to cutting pharmaceutical use by supporting patients to use inhalers more efficiently.

2. Switching to greener alternatives: for the resources we use, we must reduce the environmental impact of those resources far as possible. This might include switching to uniforms made from recycled materials, or sending our clinical waste to heat recovery rather than landfill. For our buildings and travel, moving away from fossil fuels and towards electrification will be key: replacing our operational fleet with electric vehicles, or retrofitting our buildings to be 100% electrically powered – or Net Zero Carbon Ready (NZN-R).

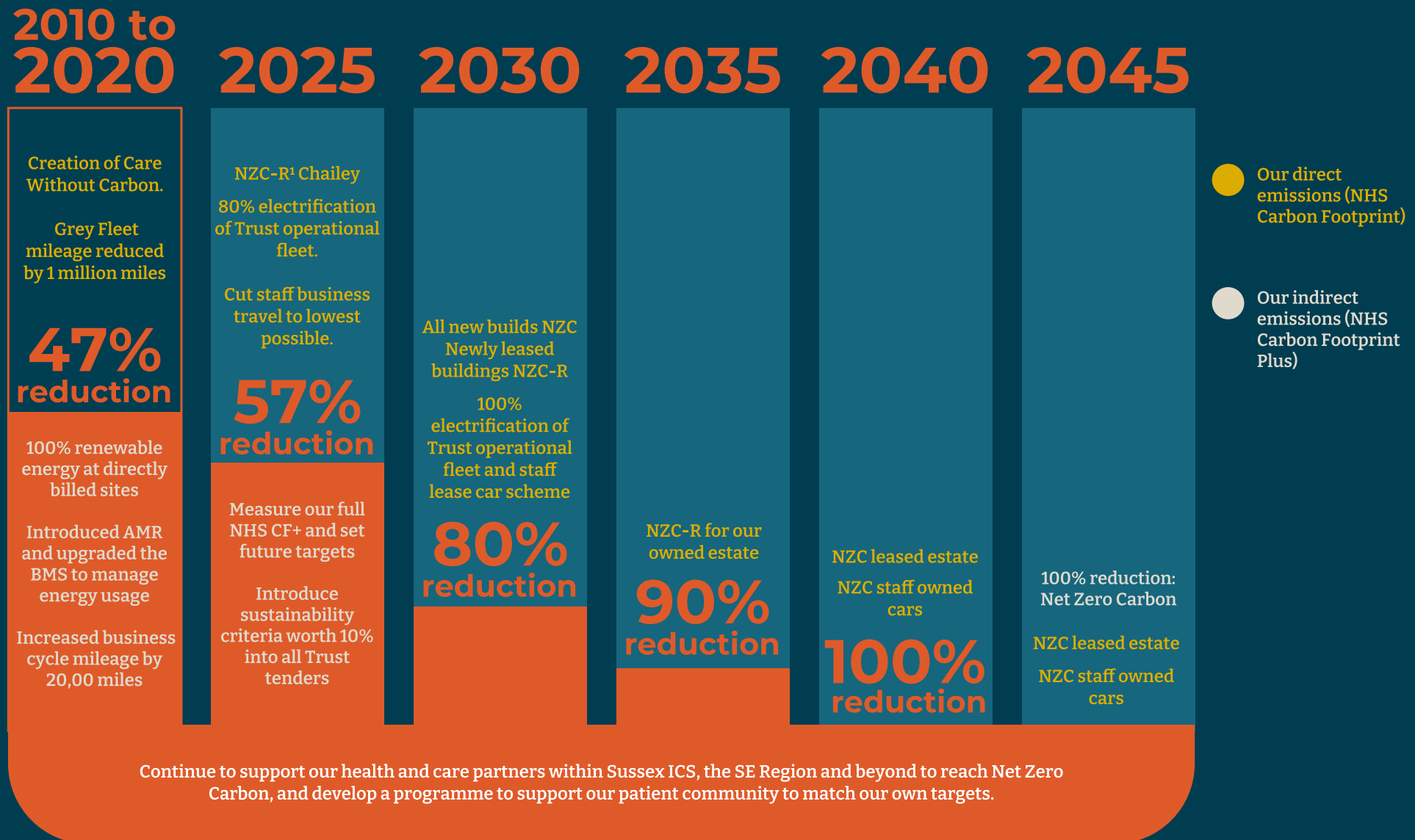
3. Offsetting (or insetting): in due course and in line with any government or NHSEI guidance, we will consider the potential for offsetting* any emissions that we cannot reduce in other ways. In particular we'll focus our efforts on insetting* projects that directly benefit our patient community.

Based on this approach, and in line with our target trajectory, we have developed a phased delivery plan to Net Zero. This is based on initial feasibility studies and will be firmed up over the next 12-18 months. In all cases we are aiming to reach NZC as soon as possible and by 2040/2045 at the latest.

*Offsetting is balancing each tonne of carbon we create by supporting carbon capture such as tree planting projects, or buying carbon credits.

*Insetting is where we are able to balance carbon we create through carbon capture in our own projects at the Trust rather than externally through offsetting.

Our roadmap to Net Zero Carbon



[1] NZC-Ready (NZC-R) buildings are 100% powered by electricity. For most Trust buildings this means moving away from fossil fuel (typically gas) powered heating, to electric. As such, when the electricity from the grid reaches NZC (anticipated in the early 2030s), these buildings will also become NZC.

How we will deliver: our key projects

Detailed action plans for each of our eight areas of work are set out within the Green Plan document. Our four key areas of focus between now and 2025 are summarised below

1 Refocussing through the pandemic: responding to changes we've seen over the last 18 months that have been helpful for the environment and those that have added to the problem.



Single use PPE: work with clinical colleagues to reduce single use PPE and improve waste segregation now and following the pandemic.



Agile working programme: work with clinical and digital teams to better understand of our minimum possible business mileage and schedule a programme to deliver that by 2025.

2 Deeper clinical integration across the Trust: meeting Net Zero by 2040 requires a big shift in delivery of care which cannot be achieved without input from clinicians.



Engagement Programme: work with clinical services across the Trust to develop an engagement programme supporting delivery of this strategy, aiming to integrate our Sustainable Healthcare Principles into core clinical practice.



Greener medicines: work with pharmaceutical colleagues to understand the full impact of our pharmaceuticals and implement a programme to reduce that.

3 Delivering against our NZC commitment: this challenging target will require full focus between now and 2040 with a clear path for delivery that moves us forwards year on year.



Finalising the details of NZC delivery plans: develop a Net Zero Carbon strategy for each area of our carbon footprint including accurate measures of impact, finalised targets and delivery plan.



NZC-R Chailey: deliver a flagship Net Zero Carbon Ready project at Chailey Clinical Services, moving to 100% electrically powered heating and developing green spaces to support staff and patient wellbeing programmes.



NZC Brighton General Hospital redevelopment: ensure the BGH redevelopment project delivers a Net Zero Carbon site that meets our three sustainable healthcare principles.



Electrifying the fleet: switch 80% of our operational fleet vehicles (pool cars, couriers, departmental vehicles) to electric by 2025.

4 Escalating our impact through partnership working: tackling carbon emissions together maximises the gains we can make for our region and ensures adaptations benefit everyone.



Climate adaptation: work with our ICS partners to understand what climate change means for us in Sussex, and how we need to adapt our clinical services and buildings.



Engaging with our patient community: work with public health colleagues to identify opportunities to support our patient community and reduce health inequality through sustainability.



Our vision: together we lead the way in Net Zero Carbon healthcare, protecting the environment on which our health depends.

To find out more about us, contact:

Susie Vernon

Associate Director of Sustainability

07435 733232

susie.vernon@nhs.net

Visit our websites:

carewithoutcarbon.org | sussexcommunity.nhs.uk

Follow us on Twitter:

[@carewithoutCO2](https://twitter.com/carewithoutCO2)

This publication is printed on 100% recycled paper