

MINOR INJURIES UNIT

The Minor Injuries Unit at Lewes Victoria Hospital is open 8am to 8pm seven days a week.

The unit provides assessment and treatment for a wide range of minor injuries for both children aged 1+ and adults.

It is a walk in service but patients are also accepted via the ambulance service and GPs. Advice in person or by telephone. X-ray facilities are available on-site 9am to 5pm Monday to Friday.

Tel: **01273 474153 / 402504**

Web: www.sussexcommunity.nhs.uk/miul

Minor Injuries Unit
Lewes Victoria Hospital
Nevill Road
Lewes
BN7 1PE

TO BOOK TRANSPORT

Call: **01273 612332**

Email: info@ctla.org.uk

Web: www.ctla.org.uk

 **CTLA**  **@CTLALEWESAREA**

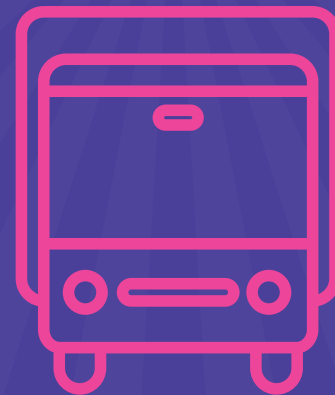
Registered Charity No. 1110215

feel
GOOD
NEWHAVEN
PEACEHAVEN

NHS



free
**PATIENT
TRANSPORT**



for Newhaven and
Peacehaven residents

free TRANSPORT TO AND FROM YOUR HOME

WHO CAN USE THE SERVICE?

Patients of the following GP surgeries can use the service:

- Quayside Medical Practice
- Chapel Street Surgery
- Meridian Surgery (Anchor Healthcare Centre)
- Rowe Avenue Surgery

WHERE CAN I GO?

- Your GP practice
- Lewes Victoria Hospital and Minor Injuries Unit
- Anchor Healthcare Centre
- Newhaven Rehabilitation and Polyclinic
- Dermatology Clinic at School Hill Surgery



Free to use

Door to door service

Monday to Friday

(excluding public holidays)

8am to 6pm

(subject to availability)

- Buggy and wheelchair friendly and easily accessible
- Bookings can be made on the day and up to two weeks in advance. (Subject to availability)
- All passengers **must register** to use the service.