



Research

**NHS**

**Sussex Community  
NHS Foundation Trust**

# newsletter

September 2022

There are opportunities for SCFT patients & staff to be involved in Research. For further details about the studies and full inclusion/exclusion criteria please contact the Research Team: [SC-TR.Research@nhs.net](mailto:SC-TR.Research@nhs.net)

For the latest research news, events & funding opportunities follow social media: Twitter [@scft\\_research](https://twitter.com/scft_research) Facebook [@scftresearch](https://www.facebook.com/scftresearch)

## Children

### Study Title: [Breathe-Easy](#)

**NHS**

**Sussex Community  
NHS Foundation Trust**

This study is looking at the experiences of children with complex neuro-disability and their families when they use a new postural management night-time intervention. The intervention involves positioning children safely on their fronts to lower the risk of aspiration and, therefore, to lower the risk of respiratory illness. Observations and measures of children's respiratory and sleep outcomes will be carried out before and after carefully introducing the night-time intervention. Additionally, interviews will be held with children, parents, carers and relevant health professionals to find out what they think and feel about the new intervention, including any issues/challenges that occurred.

**Who can take part?** For information check [here](#) or contact Dr Sarah Crombie [sarah.crombie@nhs.net](mailto:sarah.crombie@nhs.net)

### Study Title: [Implementing EDACS](#)

**NHS**

**Sussex Community  
NHS Foundation Trust**

Implementing the Eating and Drinking Ability Classification System [EDACS](#) across health and social care settings for adults with cerebral palsy to improve shared decision-making and eating and drinking outcomes.

**Who can take part?** Patients & carers identified by wheelchair services or self-referral from adults with cerebral palsy or their Carers by emailing: [sc-tr.iedacs@nhs.net](mailto:sc-tr.iedacs@nhs.net)

### Study Title: [MOTION - Clinical Gait Analysis: Normative Data for Children with Cerebral Palsy](#)

**Interreg**   
2 Seas Mers Zeeën  
**M.O.T.I.O.N**  
European Regional Development Fund



The purpose of this part of the [MOTION](#) project (Mechanised Orthosis for children with neurological disorders) is to collect clinical gait analysis data (a walking assessment) from children with cerebral palsy aged 6 to 12 years old. The assessment results will be used to help inform the design and development of robotic assistive walking devices - to promote standing, walking and rehabilitation

**Who can take part?** Participants identified via SCFT Child Development Centre's



Excellent care at the heart of the community

### Study Title: **MOTION – Online Survey of Healthcare Professionals**

The aims of this part of the **MOTION** study are:

1. To understand the training needs of health care professionals in wearable, lower limb, robotic assistive technology for children using an online questionnaire.
2. To use this information to develop online and in person training packages, materials and resources.

**Who can take part?** Healthcare professionals who work with children can complete the [survey here: https://canterbury.onlinesurveys.ac.uk/assessment-of-training-needs-of-healthcare-professionals-i](https://canterbury.onlinesurveys.ac.uk/assessment-of-training-needs-of-healthcare-professionals-i)



### Study Title: **MOTION - Interviews to assess parents' views on, and training needs in, the use of robotic assistive technology (exoskeletons) for their children**

The **MOTION** project aims to develop an exoskeleton and associated technology and train parents and professionals in its use. This part of the project is to interview parents about their use and knowledge of, and training needs in, robotic assistive technologies like exoskeletons, and to use the outcomes to help develop appropriate training.



**Who can take part?** Parents or carers of children or young people up to the age of 18 with cerebral palsy, who regularly uses rehabilitation services such as Occupational Therapy (OT) and Physiotherapy. Contact: Joanna Apps, Principal Research Fellow [motion@canterbury.ac.uk](mailto:motion@canterbury.ac.uk) for more information.

### Study Title: **Sialanar Drug Utilisation Study**

Sialanar is a treatment for drooling. This research project will test the understanding of the information that is provided with Sialanar and that patient's carers understand how Sialanar is used, how to change the dose and when to change the dose if the patient experiences side effects.

**Who can take part?** Patients and carers identified via Chailey Clinical Services



### Study Title: **Sleep-Impulsivity-Behaviour (SIB) Study**

This research project, led by Dr Caroline Richards, is based in the School of Psychology at the University of Birmingham. The project aims to better understand behaviour in children with autism and intellectual disability.



UNIVERSITY OF  
BIRMINGHAM

**Who can take part?** Families identified by Child Development Services

## Diabetes

### Study Title: **HypoRESOLVE project**

A team at the University of Sheffield recently completed some research on aspects of quality of life associated with hypoglycaemia for people living with diabetes. They are now developing a questionnaire that could be used in future studies.



**Who can take part?** People living with diabetes and experience of hypoglycaemia. To access the survey and find out more details about the research click here: <https://tinyurl.com/4n4xj6cm>

**Please note this survey is open until 30<sup>th</sup> September 2022.**

## Frailty

### Study Title: **LiFE - Living Well with Frailty Experiences Study**

The aims of this study are: 1) to understand what frailty means for older people and their family carers, and to understand what it is like to experience and live with frailty. 2) to use these understandings to help design person-centred interventions for people with frailty.



**University of Brighton**

**Who can take part?** Service users and health care professionals who deliver frailty services.

## Mental Health

### Study Title: **RESPOND - Comparing the Effects of Mindfulness-Based Cognitive Therapy and Treatment as Usual in Patients who are Continuing to Suffer from Depression after IAPT High-Intensity Therapy**



Mindfulness-Based Cognitive Therapy (MBCT) has been shown to be effective in reducing the risk of relapse in patients with recurrent depression and who are currently in recovery. This study is looking into the use of MBCT for patients who still suffer from symptoms of depression after receiving a high-intensity IAPT therapy. The study participants will be randomised to receive either MBCT or usual care and their outcomes compared.

**Who can take part?** People identified via the Time to Talk Service.

## Musculoskeletal

### Study Title: **IMID (Immune-Mediated Inflammatory Diseases) BioResource**

The IMID BioResource is a component part of the NIHR BioResource. It aims to help research into the causes of Immune-Mediated Inflammatory Diseases and understand determinants of IMID severity and treatment response. All volunteers donate a blood sample and consent to be contacted and invited to participate in future medical research, based on analysis of their samples and information they have supplied.

**NIHR | BioResource**

**Who can take part?** Patients with immune-mediated inflammatory diseases (IMIDs) and relatives identified by MSK services

**Study Title:** Does peripheral neuroinflammation predict chronicity following whiplash?

This study is looking at whether inflammation of the nerves in the neck and arm is a cause of pain soon after a whiplash injury. Also whether simple clinical tests can be used to identify patients who have nerve inflammation, and whether those patients with nerve inflammation go on to develop chronic pain.



**Who can take part?** Patients identified by the Minor Injuries Services.

## Neurological

**Study Title:** MND Register for England, Wales and Northern Ireland

This is a research database that will act as a central resource of information from patients with Motor Neuron Disease (MND) in England, Wales and Northern Ireland. <https://mndregister.ac.uk/>



**Who can take part?** Patients identified by the MND team

**Study Title:** MiNDToolkit Feasibility Study - Practical Management of Behavioural Impairment in Motor Neurone Disease

A randomised controlled trial to test a new online tool comprising psycho-educational modules for carers of patients with MND, tailored for the symptoms they are dealing with. Plus tools for healthcare professionals including educational information, structured interactive clinical reasoning & techniques for the management of behavioural changes.



**Who can take part?** Family carers of people with MND who have cognitive or behavioural changes as identified by the MND Practitioners.

## Palliative Care

**Study Title:** MePFAC - Methylphenidate versus placebo for fatigue in advanced cancer



To estimate the clinical effectiveness of methylphenidate versus a placebo, for cancer-related fatigue in patients receiving specialist palliative care.

**Who can take part?** Patients identified by the SCFT Palliative Care Services.

## Primary Care

### Study Title: **Active Brains**

This national study is being run by the University of Southampton and funded by the National Institute for Health Research. The study is testing an online programme [www.activebrains.online](http://www.activebrains.online) to help people aged 60-85 with lifestyle changes and brain training activities which may help with memory and thinking skills.



**Who can take part?** Patients identified via GP practices.  
Please contact [sc-tr.activebrains@nhs.net](mailto:sc-tr.activebrains@nhs.net) for further information.

## Rehabilitation

### Study Title: **ADAPT - Evaluation of ADAPT Assistive Technology (AT) Training**

Canterbury Christ Church University have developed AT training materials designed for Health and Social Care (HSC) professionals who are in contact or working with AT or users of AT, to improve practitioner knowledge and understanding. This study aims to obtain participants' views and experiences of the training which will be used to enhance the material and content.



**Who can take part?** Health professionals who have undertaken unit(s) of the ADAPT AT Training.  
<https://www.canterbury.ac.uk/medicine-health-and-social-care/adapt/training/training.aspx>

### Study Title: **RECREATE - Reducing sedentary behaviour after stroke**

A multi-centre study looking at the clinical & cost-effectiveness of an intervention versus usual care to reduce sedentary behaviour in people after stroke.



**Who can take part?** Worthing Neuro rehab team are involved in this study. [@recreate\\_stroke](https://twitter.com/recreate_stroke)





## Diabetes Survey

Do you have diabetes and experience hypoglycaemia? Would you like to be involved in research? A team at the University of Sheffield is interested in hearing from you. Please click on the link below to access the survey on quality of life in people living with diabetes who experience hypoglycaemia and to find out more details about the research: <https://tinyurl.com/4n4xj6cm>

**Please note: Survey closes 30<sup>th</sup> Sept 2022**

## Research Lunch & Learn

### Spotlight on AHPs

**Thursday 13<sup>th</sup> October 1-3pm on TEAMS**

An opportunity for Allied Health Professional colleagues to present their work (project ideas, research, quality improvement, audit, postgrad dissertations) in an informal supportive environment. Followed by an orienteering session, discussing the positives of research, ways to embed a research culture within services plus the practicalities of conducting research. This session is part of the national AHP appreciation day (14<sup>th</sup> October) celebrations.

**For the TEAMS link email:** [sc-tr.research@nhs.net](mailto:sc-tr.research@nhs.net)



## Future Event

### Practicalities of Research

**Monday 7<sup>th</sup> November 12.30-1.30pm on TEAMS**

Discussing ways to make time for research, opportunities for training/funding, getting a project idea off the ground, how to join a multi-centre study.

**All staff welcome. To register please email:**

[sc-tr.research@nhs.net](mailto:sc-tr.research@nhs.net)

This session coincides with the national NIHR 'Your Path in Research' campaign

<https://www.nihr.ac.uk/health-and-care-professionals/your-path-in-research.htm>



## PhD Support Group

The next PhD support will take place on **Wednesday 9<sup>th</sup> November at 4-5pm.**

This is an informal friendly group for anyone planning, applying for or undertaking a PhD. The group meet approx. three times a year but can access a virtual weekly writing room on TEAMS and what's app chat **Please email us to be added to the mailing list:** [sc-tr.research@nhs.net](mailto:sc-tr.research@nhs.net)



## ADAPT Free Training

Free online training developed by Canterbury Christ Church University for those working with Assistive Technology (products or systems that support & help individuals with disabilities, restricted mobility or other impairments to perform functions that might otherwise be difficult or impossible) in healthcare, who may work with it in the future, or who have an interest.

Learning certificates issued by undertaking the evaluation at the end of each unit. More information and how to access the training: <https://bit.ly/3JNNaiR>



## MOTION Questionnaire

Our MOTION ([www.motion-interreg.eu/](http://www.motion-interreg.eu/)) project partners, Canterbury Christ Church University, are designing training and information for professionals on Robotic Assistive Technology with children and are asking all **Physios, OT's** and other **Paediatric Rehabilitation Professionals** - What do you know about the use of Robotic Assistive Technology with children? Have you used it, seen it, or read about it or is it a new area that you would like to know more about? For information and to complete the survey: <https://canterbury.onlinesurveys.ac.uk/assessment-of-training-needs-of-healthcare-professionals-i>



## Autumn Research Symposium

Join the NIHR Applied Research Collaboration Kent, Surrey and Sussex on **29 September 10 - 12pm** for their Autumn Research Symposium.

Find out more about the impact research is making into changing practice and improving health and care across the region. With an opportunity to engage directly with researchers from St Barnabas Hospice, University of Surrey, Sussex Community NHS Foundation Trust and much more.

Register here: <https://bit.ly/3KRev5d>



## Young People's Advisory Group

The recent Young People's Advisory Group, Kent, Surrey & Sussex **YPAG KSS** meeting took place on **Saturday 10<sup>th</sup> September** at the Royal Alex. The group gave feedback on a research project about whether the RESPECT processes for managing serious health deterioration and potential end of life events are suitable for families with children who have complex health needs. And a project looking at online mindfulness-based group parenting interventions to support parents of children with Cystic fibrosis. If you are interested in presenting your project to the group please contact: [ypagkss@nihr.ac.uk](mailto:ypagkss@nihr.ac.uk)







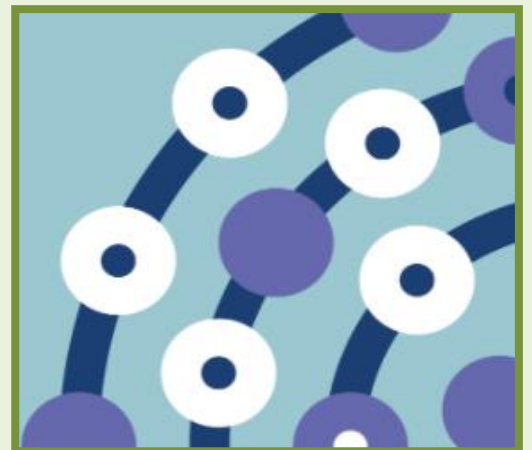
**Research Design Service South East Research Programmes Online Workshop**  
**28th September 10-1pm** - An overview of NIHR funding opportunities and research programmes and application processes.

**Lunchtime Research Journey Webinar**  
**5th October 12.30-1.30pm** - leading researchers share their journeys and answer questions about how to build a successful research career.

Email: [A.Lux@brighton.ac.uk](mailto:A.Lux@brighton.ac.uk) for more details.  
 Plus Weekly Project Development Sessions  
 Check: [www.rds-se.nihr.ac.uk](http://www.rds-se.nihr.ac.uk) for all workshops, seminars and funding opportunities from the RDS.

## Funding & Learning

The **Associate Principal Investigator (API) Scheme** aims to develop doctors, nurses and other health professionals to become the Principal Investigators (PIs) of the future. This is a six month in-work training opportunity providing practical experience. Participating healthcare professionals receive formal recognition of engagement in NIHR Portfolio research studies through the certification of Associate PI status, endorsed by the NIHR and Royal Colleges, including the Royal College of General Practitioners. Find out more information about the scheme on the [NIHR website](#).



**Research & Innovation, Brighton General Hospital, Elm Grove, Brighton BN2 3EW**  
 01273 696011 | [www.sussexcommunity.nhs.uk](http://www.sussexcommunity.nhs.uk) | [SC-TR.Research@nhs.net](mailto:SC-TR.Research@nhs.net) | Unsubscribe